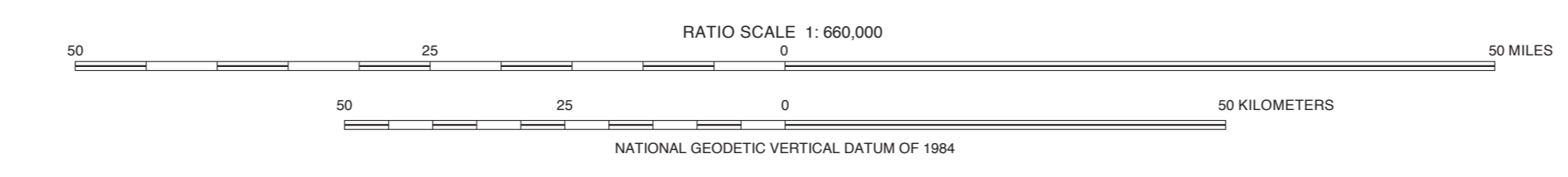
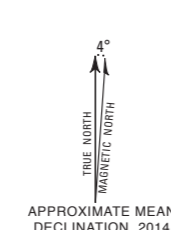
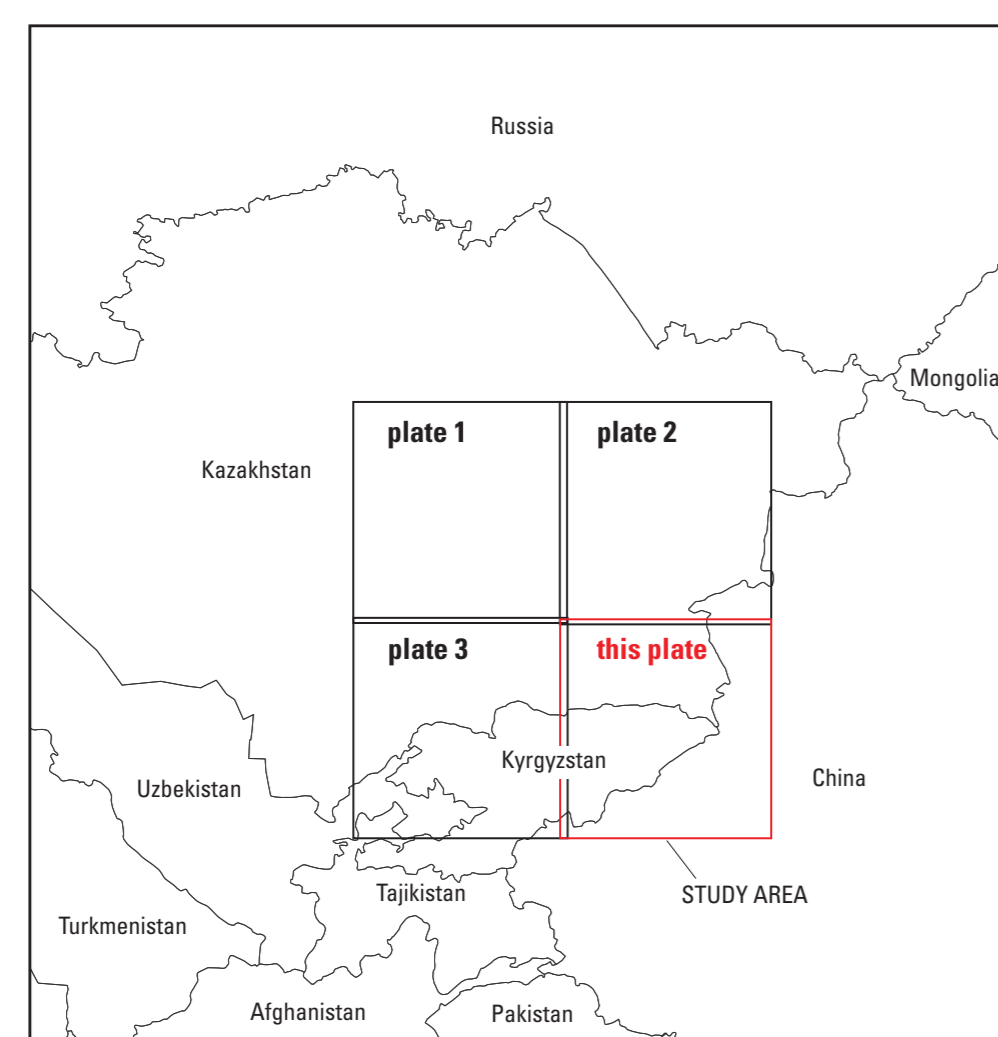


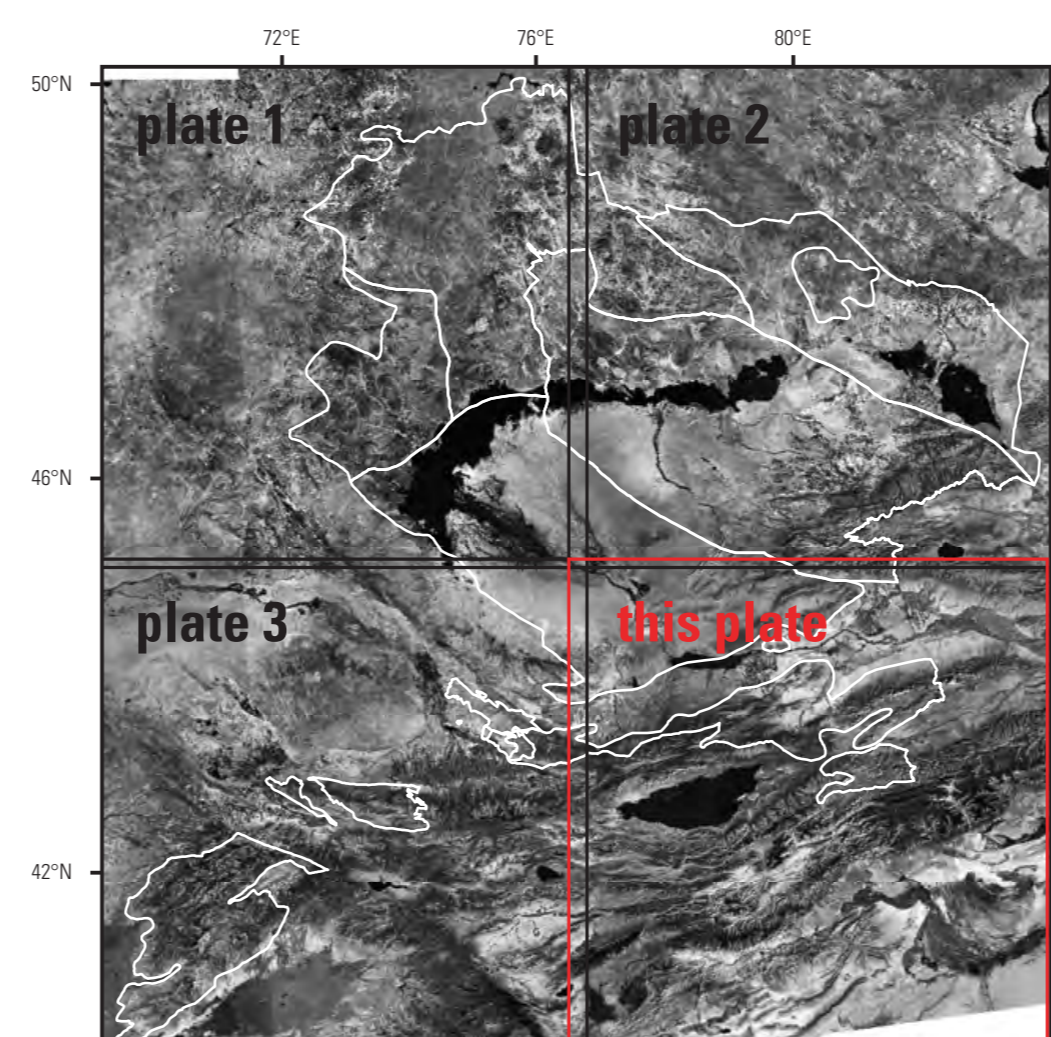
Base is Landsat Thematic Mapper band 7 grayscale image (<http://landsat.usgs.gov/>) Universal Transverse Mercator projection



ASTER Equatorial Thermal Emission and Reflection Radiometer (ASTER) data were used to map hydrothermal alteration, including argillic, phyllic, and silicic altered rocks.



Index map showing location of study area, this map area (red outline), and bordering map areas (black outlines).



Index map showing location of this ASTER hydrothermal alteration map area (red outline), bordering map areas (black outlines), and permissive tract boundaries (white outlines).

EXPLANATION

[NOTE FOR PLOT USERS: Small, isolated data areas may be difficult to see on plots; see files for detail (<http://pubs.usgs.gov/sir/2010/5090/w/>)]

Alteration units, mapped using ASTER data

- Phyllic-altered rocks
- Silicic-altered rocks
- Argillic-altered rocks
- Permissive tract boundary

ASTER Hydrothermal Alteration Map of Southeastern Part of Study Area, Southeastern Kazakhstan, Kyrgyzstan, and Western China, Western Central Asia

By
John C. Mars
2014

Any use of trade, product, or firm names in this publication is for descriptive purposes only and does not imply endorsement by the U.S. Government. This map was printed on an electronic platemaster directly from digital files. Dimensional calibration may vary between electronic platemasters and printers and is not guaranteed to be the same as the printed and paper file. Large size due to atmospheric conditions. Position, scale, and projection may not be true at all points of this map. For sale by U.S. Geological Survey, Information Services, Box 2420B, Federal Center, Denver, CO 80225, 1-800-453-2555. Digital files available at <http://pubs.usgs.gov/sir/2010/5090/w/>. Suggested citation: Mars, J.C., 2014, ASTER Hydrothermal Alteration map of southeastern part of study area, southeastern Kazakhstan, Kyrgyzstan, and western China, western Central Asia, John C. Mars, J.C. Mars, J.C. Mars, J.C. Mars, J.C. Mars, U.S. Geological Survey, Scientific Investigations Report 2010-5090-N, 1 p. U.S. Geological Survey, Reston, VA. U.S. Geological Survey, 2014, Report of progress, assessment of western Central Asia U.S. Geological Survey Scientific Investigations Report 2010-5090-N, 1 p.